

STORY

*Games,
quizzes,
colouring
and more*

SITE SAFETY ACTIVITY BOOK

With Safety Sally & Safety Sid



STORY

STORY

Hello Children!

We are here to help everyone stay safe on construction sites and railway lines. You really should not go near these places without an adult.

If you do not know the answers you can ask your Mum or Dad or your teacher at school. Remember don't play near construction sites or railway lines

- they are very dangerous.

Keep Safe

*Safety Sally
and Safety Sid*



I can be spotted a total of 9 times from pages 1-12 of this workbook. Keep your eyes peeled and see if you can find me!

SAFETY SIGN SCRAMBLE

Signs are everywhere. You probably see hundreds of important signs every day without even taking notice, like street signs, shop signs, road markings, and signs around your school. A construction site will always have warning signs up because they are extremely important and are there to keep you safe. Below are some signs that can be found outside a construction site. Draw lines to match them up to their meanings, the first one is done for you.

Did you know?

These signs are used worldwide and have the same meaning in any country.



Caution! Dangerous Chemicals

Caution! Electricity

Hard hats and protective boots must be worn

No pedestrians

Keep out! Construction Site

Caution! Construction work taking place

Caution! Falling Objects

Caution! Explosive Materials

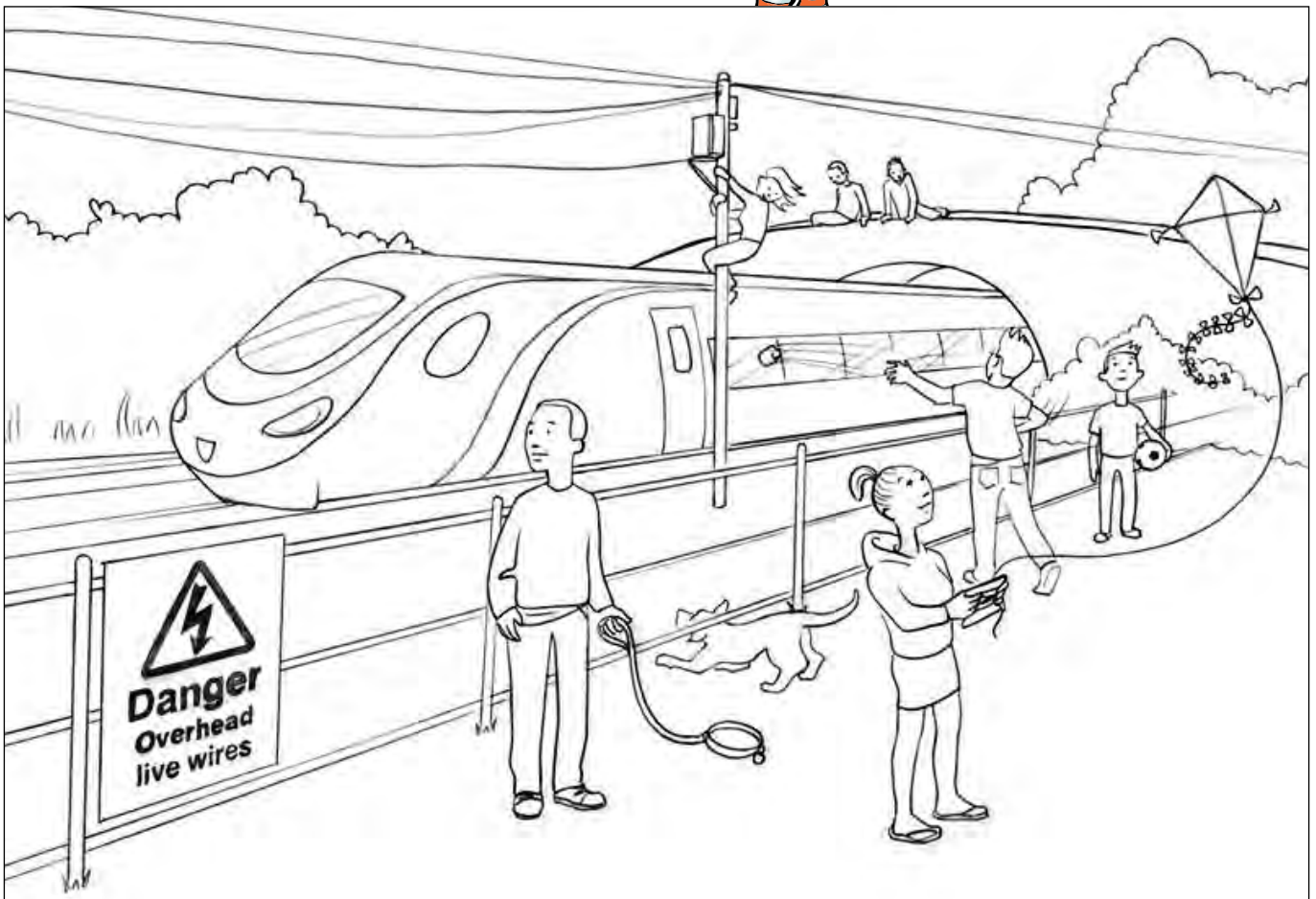


Spot the hazard

Have a look at this picture of a typical railway scene. Circle all of the things you think might be dangerous. Once you've done that you can colour the picture in!



Electricity in overhead power lines can 'jump'. You don't have to touch the overhead power lines to get electrocuted. Playing with a kite or balloon, or dangling things from railway bridges near electric power lines are very dangerous things to do.



RAILWAY ELECTRICITY IS 100 TIMES MORE POWERFUL THAN ELECTRICITY IN THE HOME. It is very dangerous so remember the **Rail Life 'Safety Top 3'**:

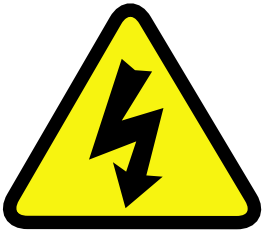


- **STAY CLEAR OF THE TRACKS.** Is it worth putting your life on the line?
 - electricity can jump up to three metres.
 - don't play with kites or balloons near overhead power lines.
- **USE THE LEVEL CROSSING.** Shortcuts across the railway can kill.
- **KNOW THE SIGNS.** Be alert to railway signs, they could save your life.

Signs of danger

Electricity on the railway is very powerful and very dangerous. Have you ever seen the warning signs below? If you have seen them tick the small box. Have a think about what they mean and write it down in the space provided.

The third rail and overhead power lines have electricity flowing through them at all times and are never switched off.



Sign	Seen it! Tick box	What does it mean?
		
		
		

Answers: 1. Electricity danger 2. Level crossing with gate or barrier ahead 3. Stop! (Light signal at level crossings for pedestrians).

I SPY A DANGER



Look at the picture of the construction site on the page opposite and use it to help you answer the questions below. Then see if you can spot all the dangers in the picture, there are 12 all together.

Questions



1 What can you see surrounding the construction site?

2 Why is this there?

3 What do you think is the most dangerous thing in the picture and why?

4 Who is at risk of danger on a construction site and why?

5 Now you can see all the dangers, do you think this looks like a fun place to play in?

Remember, there should be NO reason for you to enter a construction site without the company of a trusted adult.





FUN AND GAMES



Did you know?

There are 393 steps over 11 floors inside Big Ben in London.



There are 14 construction words in the word search below, see if you can find them!

U	A	A	T	L	T	T	H	C	Y	E	N	M	T	B
X	J	C	V	M	X	I	P	W	R	M	V	J	I	R
H	J	C	G	V	V	X	A	I	U	P	E	V	K	U
A	M	I	C	K	V	E	K	W	J	L	U	O	D	R
Z	E	D	C	S	V	Y	L	A	N	O	T	H	I	G
A	Y	E	H	I	D	C	A	S	I	Y	E	V	A	V
R	E	N	E	R	L	N	T	H	H	E	M	Q	T	I
D	W	T	W	G	K	E	G	H	F	E	L	Z	S	E
S	A	F	E	T	Y	G	L	A	S	S	E	S	R	X
Q	S	Z	H	K	M	R	O	N	F	I	H	J	I	G
N	H	X	E	O	I	E	V	D	U	G	H	Q	F	X
J	T	E	A	B	H	M	E	S	D	V	Y	H	S	J
T	P	D	L	X	C	E	S	A	I	I	J	Q	F	B
P	E	R	T	B	P	R	E	V	E	N	T	I	O	N
R	F	B	H	W	L	Q	K	G	V	H	K	M	S	G

INJURY

GLOVES

HELMET

EMPLOYEES

HAZARDS

EYEWASH

ACCIDENT

PREVENTION

SAFETYGLASSES

PPE

HEALTH

WASHHANDS

EMERGENCY EXIT

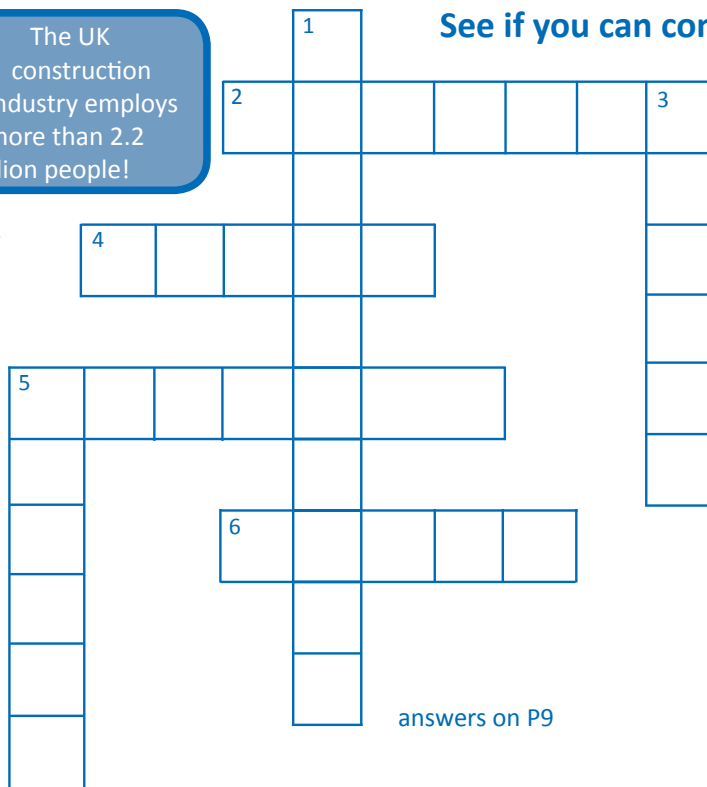
FIRSTAIDKIT

RISK



The UK construction industry employs more than 2.2 million people!

See if you can complete the crossword below!



clues

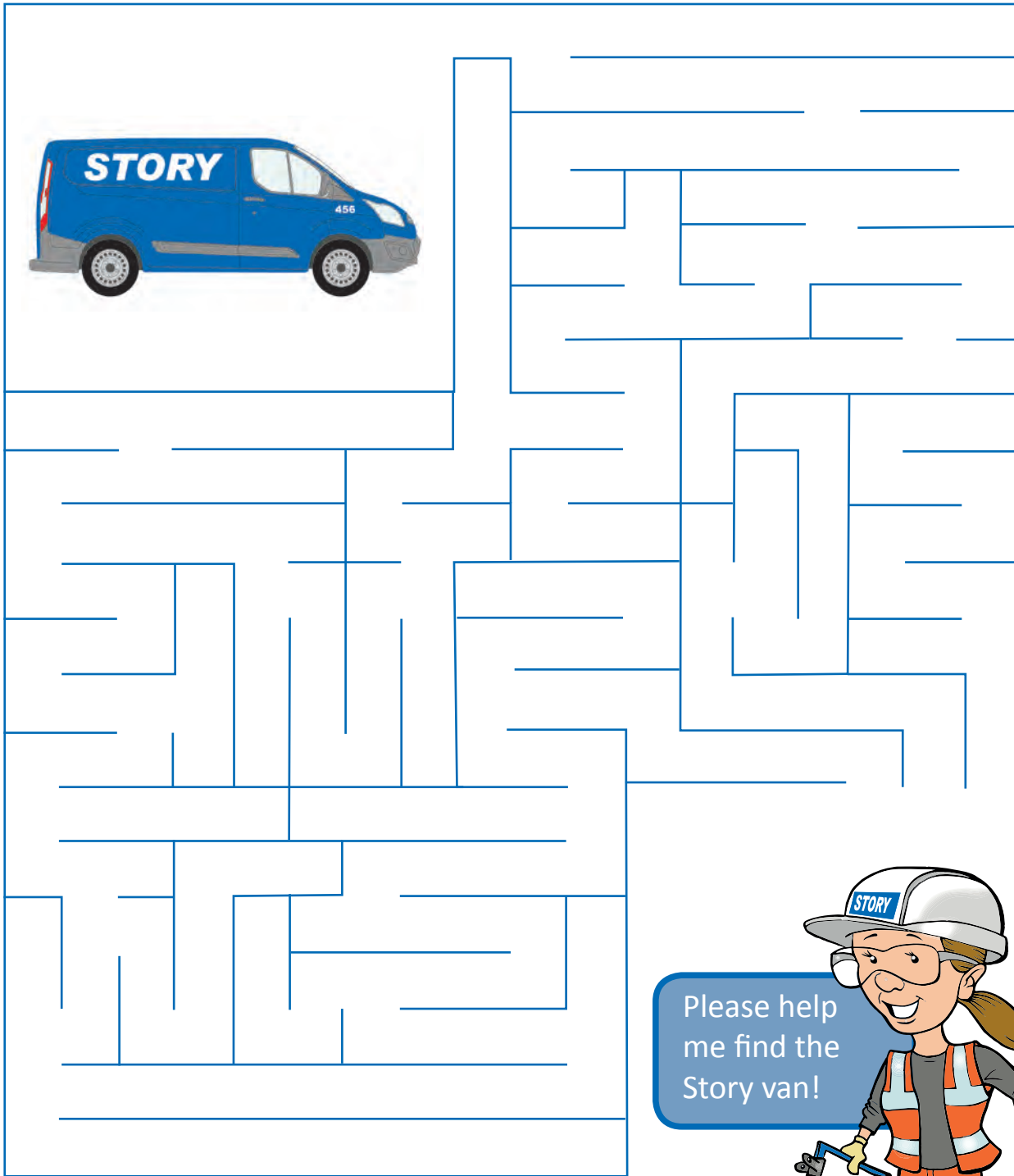
Across

- 2. instruction pictures
- 4. make flat
- 5. layers of bricks
- 6. where ends meet

Down

- 1. measurements
- 3. brick adhesive
- 5. space between bricks

answers on P9



Please help
me find the
Story van!



Remember, even if you are wearing protective clothing,
it does not mean that you are safe on a construction site,
so please read the signs and do not enter - construction
workers are trained professionals but you are not.

ANSWERS FOR THE CROSSWORD:
ACROSS: 2. DIAGRAM 4. LEVEL 5. COURSES 6. JOINT
DOWN: 1. DIMENSIONS 3. MORTAR 5. CAVITY

SPOT THE DIFFERENCE



Look at Safety Sally & Sid below. As you can see, some things are not right. Can you see what they are? Find 5 differences between the two images and circle them on picture B.

A



B



Did you know?
There were 10 million bricks used to build the Empire State Building in New York, USA.

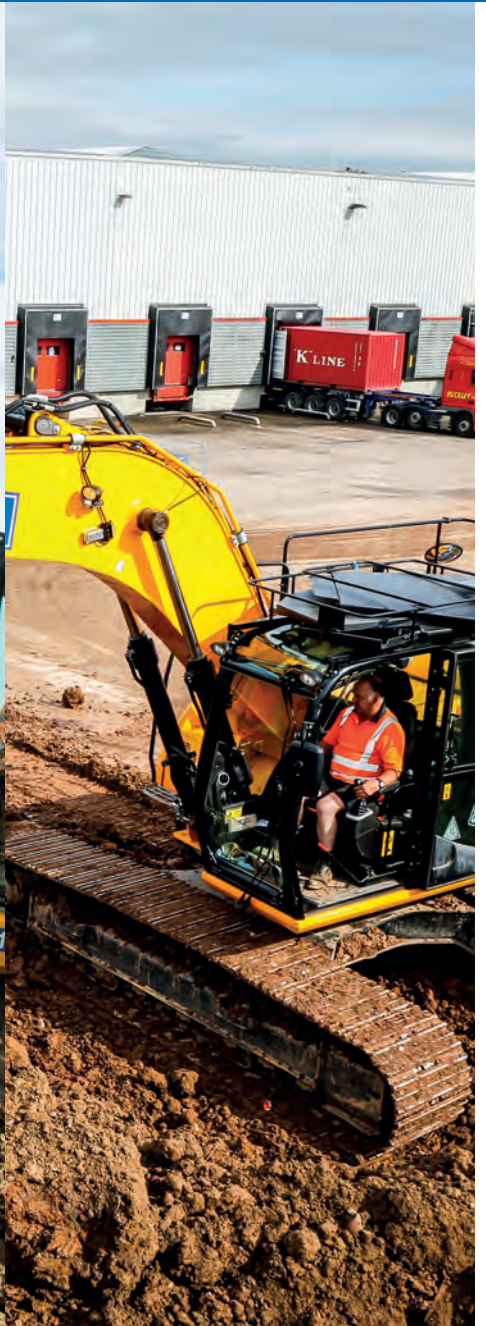


GET CREATIVE !

Now you have learnt about the importance of construction site safety, use the space below to create a construction themed masterpiece. This could be drawing a picture of Safety Sally or Safety Sid, designing a poster to warn your friends about the dangers on construction sites, or writing a poem about safety. Use your imagination and get creating!



STORY



Do it right!